

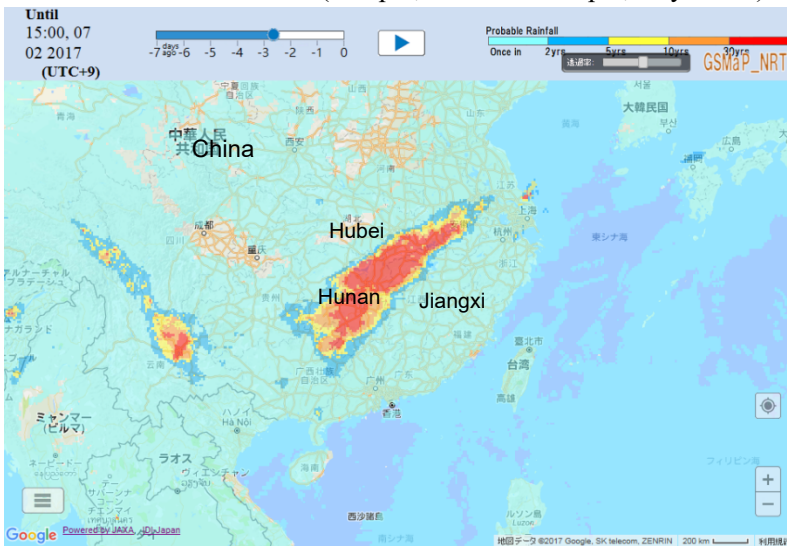
China (Central and South) FLOODS

Country and Districts	China (Central and South) Zhejiang, Anhui, Jiangxi, Hubei, Hunan, Guangdong, Guangxi, Sichuan, Guizhou, Zhuang Autonomous Region, Chongqing City	Death	56
Date of Occurrence	June 29, 2017	Missing	22
Outline	11 provinces in the central and southern China were affected by severe flooding. Numerous rivers including Yangtze River and its tributaries surpassed the warning levels.		

Precipitation Data from GFASII (Global Flood Alert System Ver.2)

GRASII is operated by Infrastructure Development Insutitute-Japan.

72 Hours Probable Rainfall (3:00pm, June 29 - 3:00pm, July 2 JST)



72 Hours Accumulated Rainfall (3:00pm, June 29 - 3:00pm, July 2 JST)

